

FASD: If It Is So Common

Why Don't We See It?

Larry Burd, Ph.D.

# What's Wrong?



# FASD: How Much Does it Take?



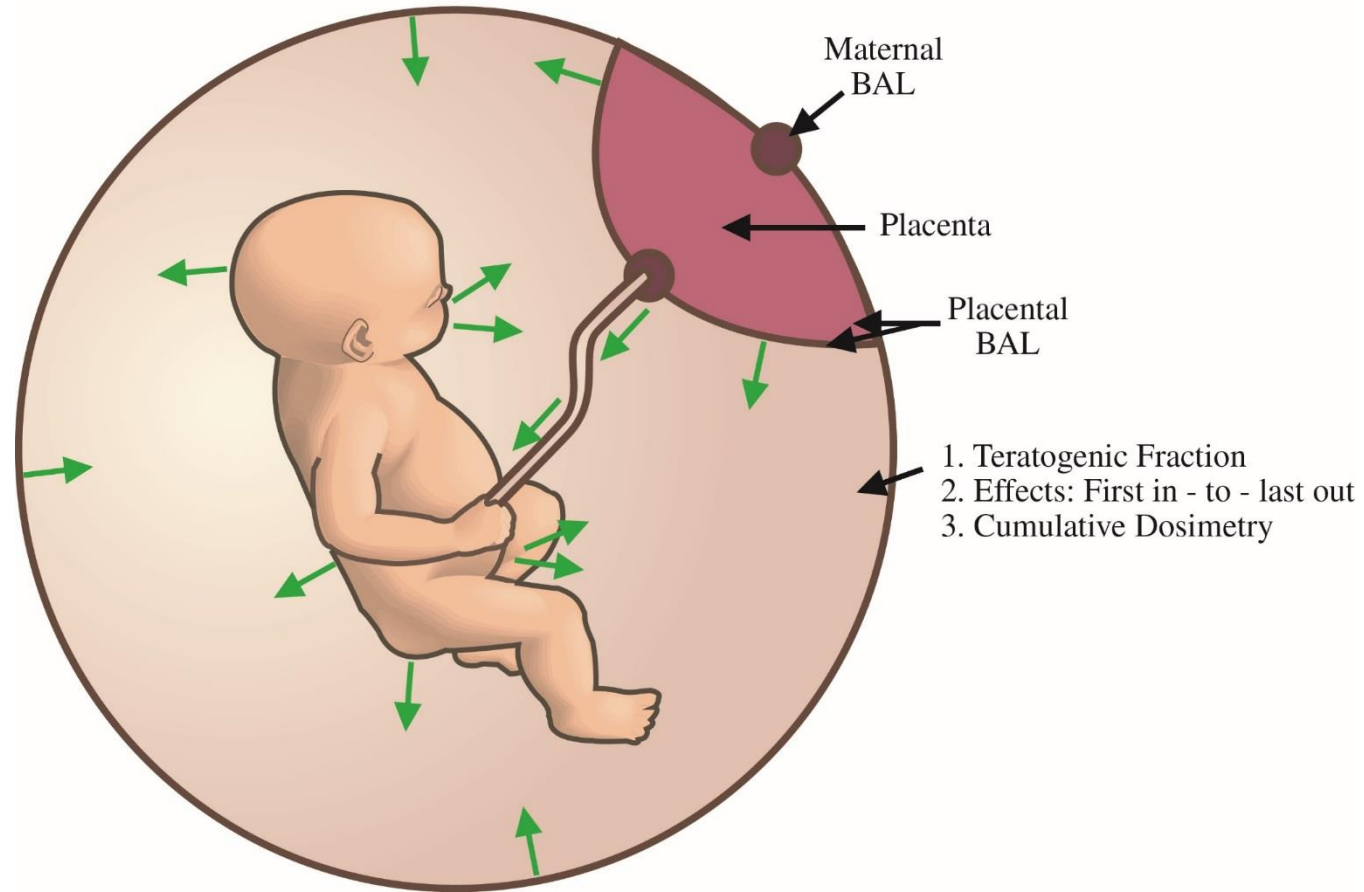
Six drinks in a week for 2 separate weeks



Three drinks at a time on 2 separate occasions



# New Concepts on Fetal Exposure



# FASD in Arkansas

- Born Each Year

FAS	78
ARND	312
<hr/>	
Total FASD	390

# FASD Recurrence in Arkansas

- Annual birth cohort 390
- Recurrent cases 98
- 20-24 will recur in families with multiple affected children.
- **Start Prevention Here**



# Cost of FASD in Arkansas

- Cost Per Day \$172,173
- Annual Cost \$77,704,470
- Annual Cost: Special Education and Juvenile Justice \$14,861,280
- 5 year Costs \$314,215,950



# Costs of FASD

Annual Costs: \$22,810 to \$24,308 + \$14,700 (parents)

26% ADHD

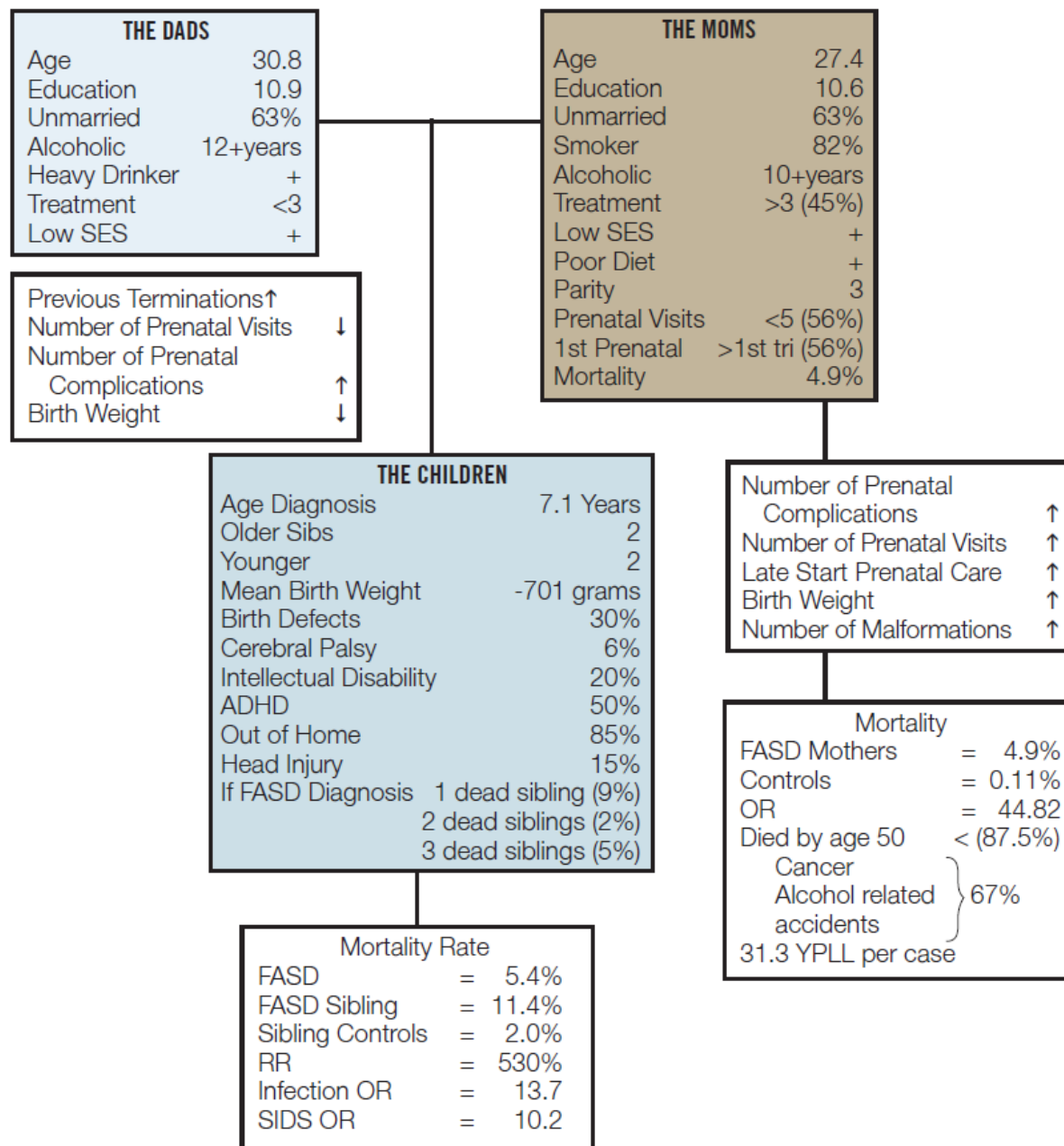
26% higher than autism

87% higher than asthma

13% higher than diabetes

56% higher than epilepsy

## The FASD Family



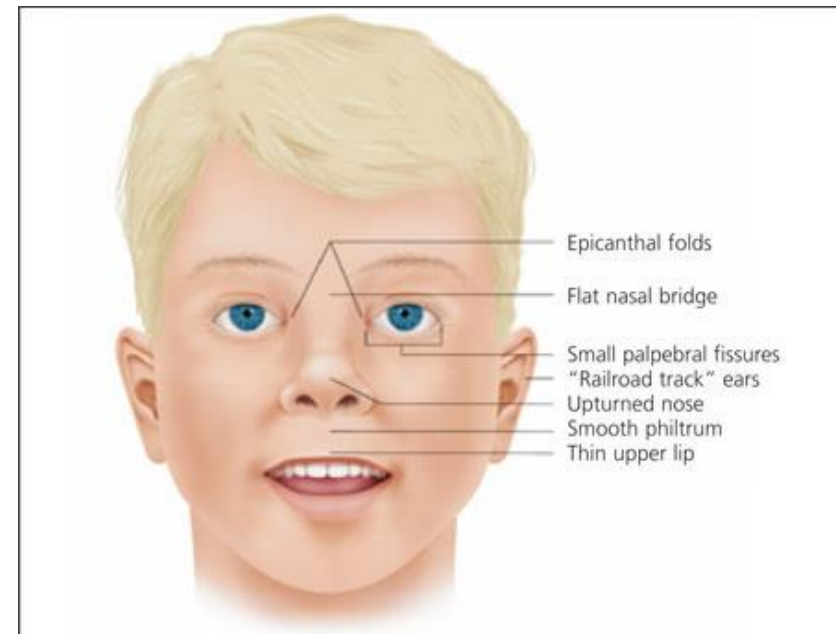
- Cases in the child welfare system which involve parental substance use 50-80%

## Children in foster care

- PAE 40-50%
- FASD 20-70%

# Nuthun Special About Me

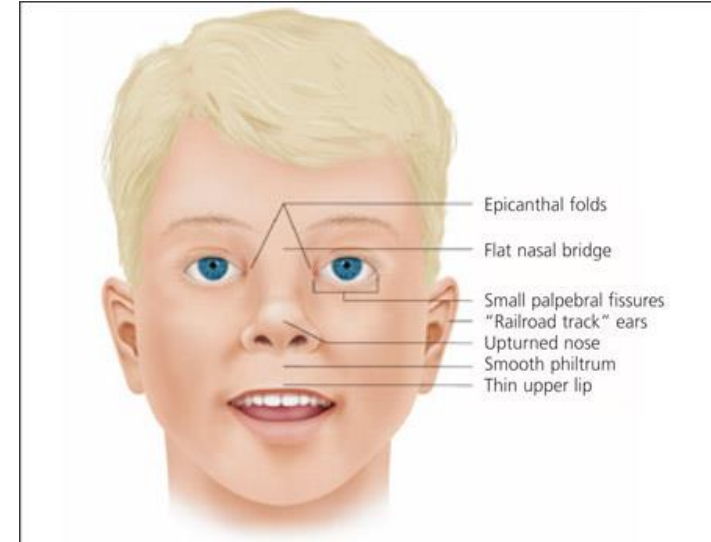
	RR
• Stillbirth	4
• SIDS	10.2
• Infectious Illness	13.7
• Mortality Risk	5.3
• Sibling Risk	5
• Maternal Mortality	(33-44)
• Head Injury	15%
• Juvenile Corrections    x	19
• Foster Care                    x	25
• Residential Care            x	25
• Independent Living	15%



# FASD

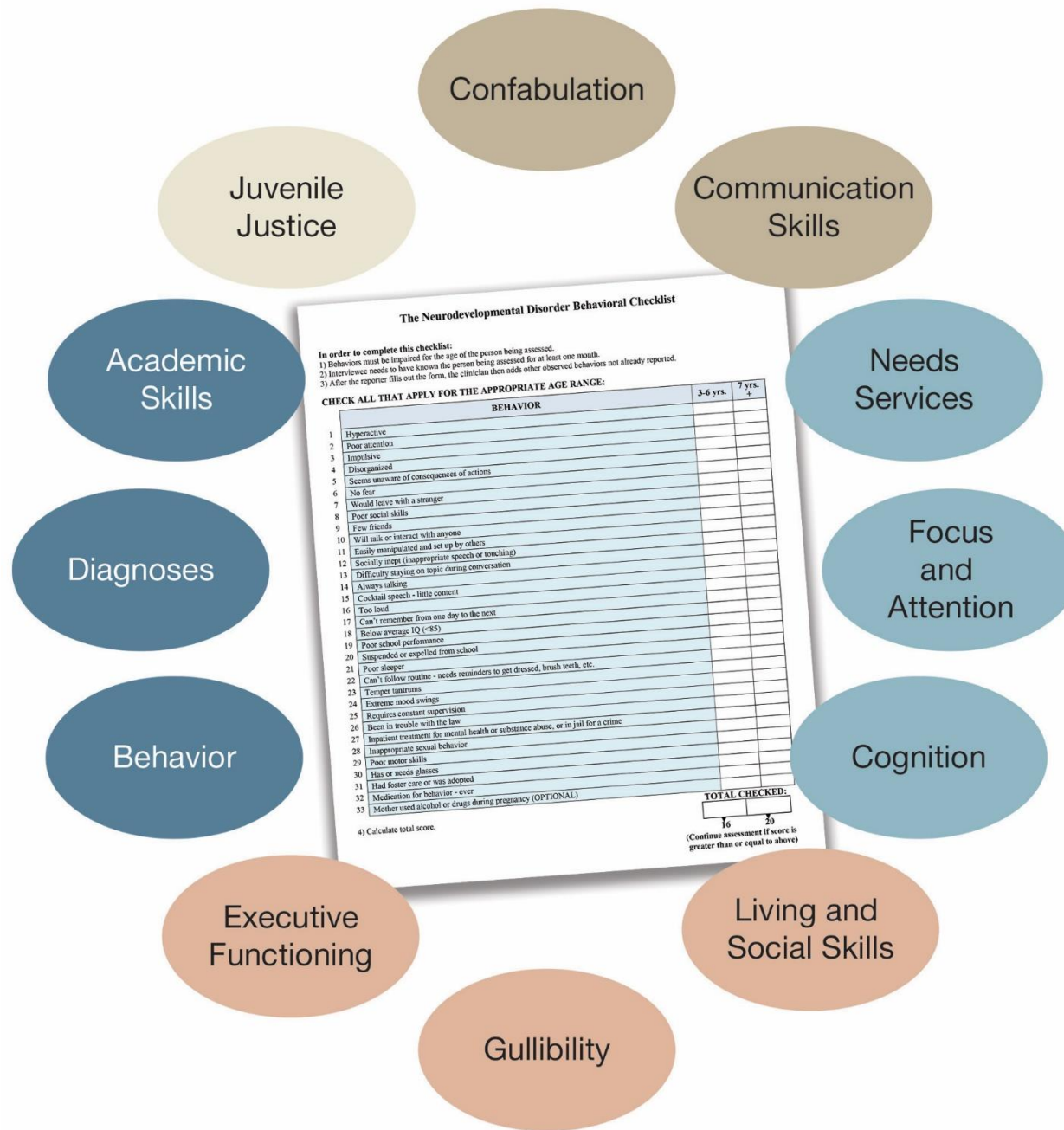
## THE Leading Identifiable Cause of:

- Intellectual Disability
- Mental Disorders in Children
- Residential Care
- Juvenile Corrections
- Developmental Disability
- Learning Disabilities



# FASD: A Leading Identifiable Cause of:

- Placement in foster care
- ADHD
- Childhood mortality
- Outpatient mental health
- Inpatient psychiatric hospitalizations
- Special education placement
- Visual impairment
- Impaired adaptive behavior



Confabulation

Communication Skills

Needs Services

Focus and Attention

Cognition

Living and Social Skills

Gullibility

Executive Functioning

Behavior

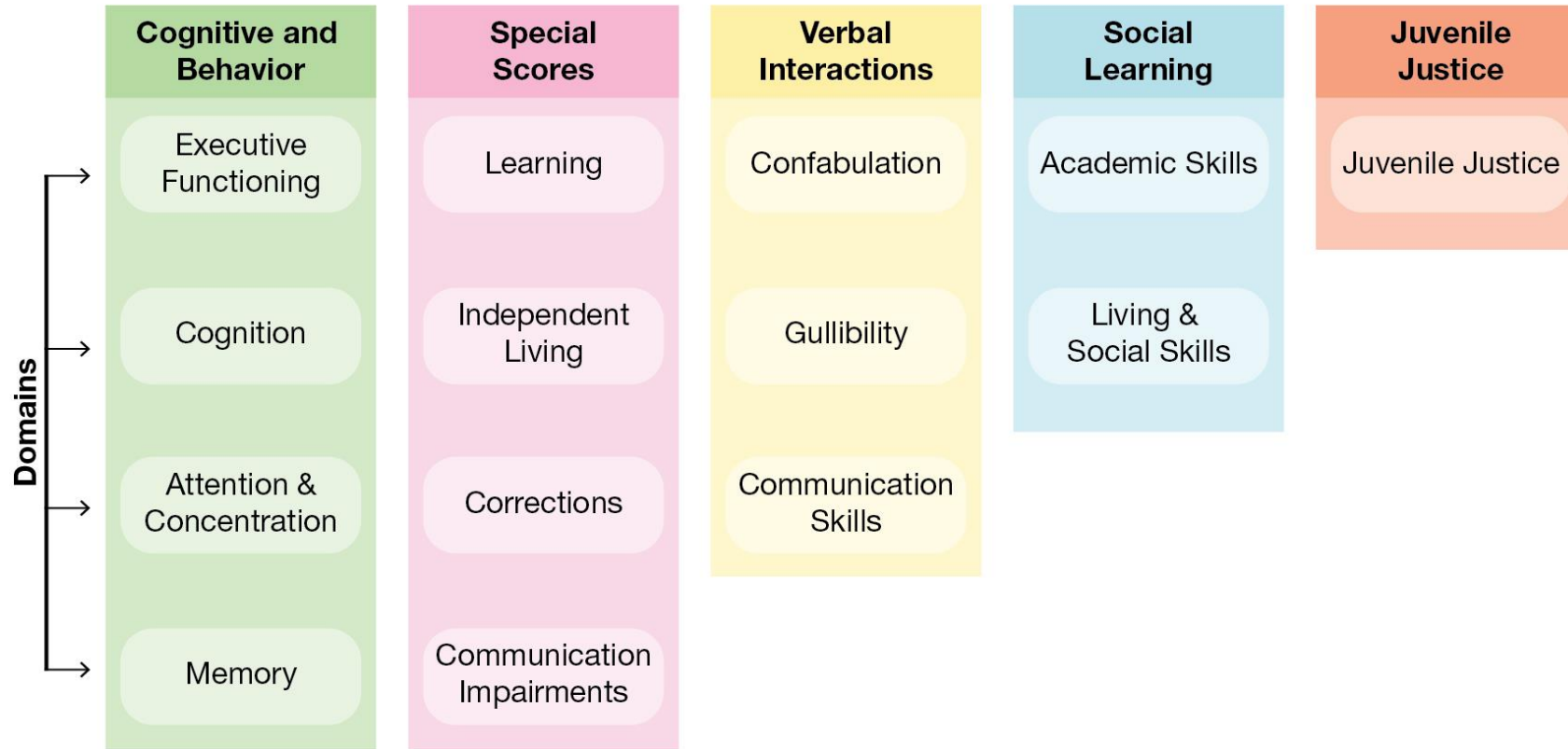
Diagnoses

Academic Skills

Juvenile Justice



# FIVE BROAD AREAS



# Parenting and FASD



## Children With FASD-Difficult to Parent

- High rates of
  - Sleep disorders
  - Eating problems
  - Toilet training difficulties
  - Temper Tantrums
  - Developmental disorders-needing therapy
  - School problems
  - Homework problems
  - Increasing severity of phenotype

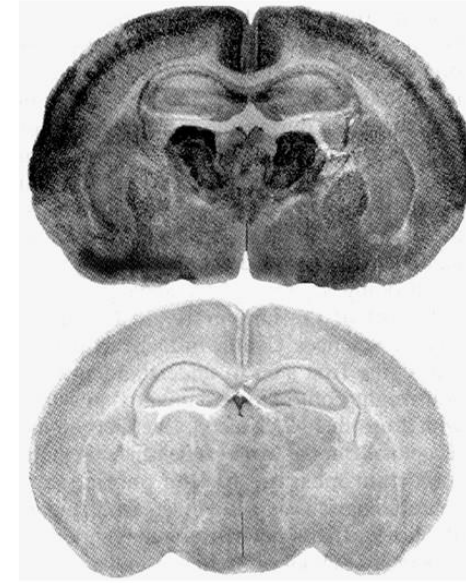
# Interventions

- Understand FASD
- Slow pace
- Picture schedules
- Decrease memory burden
- Manage anxiety
- Positive behavior management – less escalation
- Understand effects of comorbidity
- Comorbidity and future risk reduction
- Respite care for caretakers

# Could we prevent much of this?



See PAE, Think Impairment



**ARND: Risk Factors Ahead**

- Exit 1 Abuse/Neglect
- Exit 2 Mental Disorders
- Exit 3 School Problems
- Exit 4 Legal Problems
- Exit 5 Substance Abuse
- Exit 6 Dependent Living